

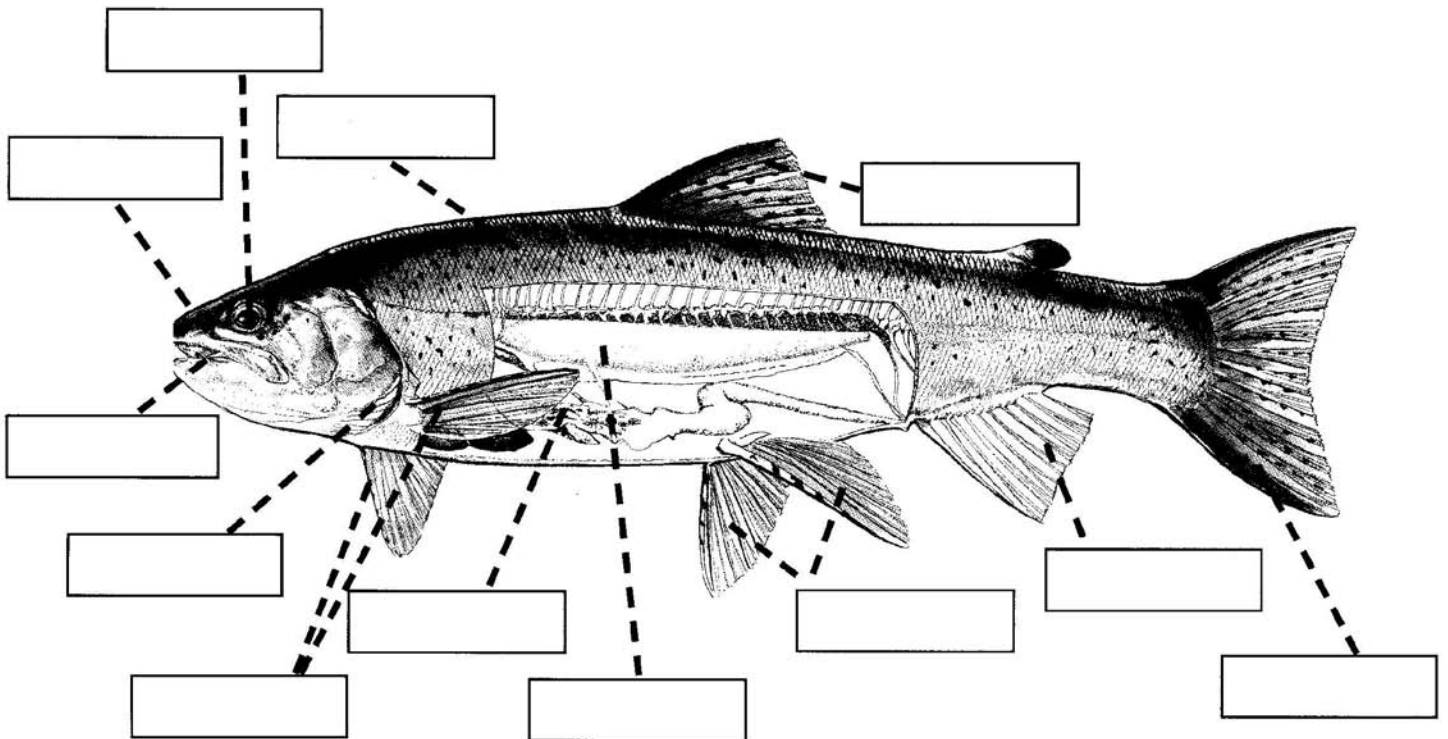
# Fishy bits

## Can you label this fish?

Use the words below to label this fish.

There are explanations of the words which might help you to get them in the right places!

<b>Scales</b>	<b>Dorsal fin</b>	<b>Anal fin</b>	<b>Swim bladder</b>
<b>Gills</b>	<b>Tail fin</b>	<b>Stomach</b>	<b>Eye</b>
<b>Nostril</b>	<b>Pelvic fins</b>	<b>Mouth</b>	<b>Pectoral fins</b>



### Words and their meanings:

<b>Dorsal</b>	back
<b>Anal</b>	near the anus
<b>Pectoral</b>	near the chest
<b>Pelvic</b>	near the pelvis, which supports the lower body

Taken from "Water Matters Teachers Pack" produced by Countryside Alliance